

DIN6-F-BO-V1A

1. Description:

DIN6-F-BO-V1A is a simple Din 6 Female socket breakout board. It brings all 6 pins of a Din 6 Female socket to screw terminal blocks or headers for easy testing, prototyping and breadboard connection. For breadboard connections, user can use the 10pin header on the bottom for a sideways connection. User can also use the two 5pin headers on both sides of the breakout board to connect to the front end of the breadboard for a steady connection.



2. Features:

- All 7 pins (including shield) of a Din 6 Female socket brought out to headers or screw terminal blocks
- Various connecting method chosen by users.
- 2 mounting holes with 2mm diameter hole size
- 1.0"(25.4mm)X1.0"(25.4mm) board dimensions

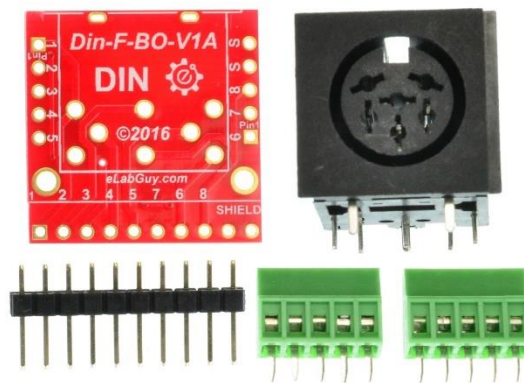


Figure 1: Parts inside the kit

(Note: the module is not assembled, user can decide which connector to use on the module.)

3. Parts:

- 1) 1pc X **DIN-F-BO-V1A PCB**
- 2) 1pc X **Din 6 Female socket**
- 3) 2pc X **5pin 0.1"(2.54mm) spacing terminal block**
- 4) 1pc X **10pin 0.1"(2.54mm) header**

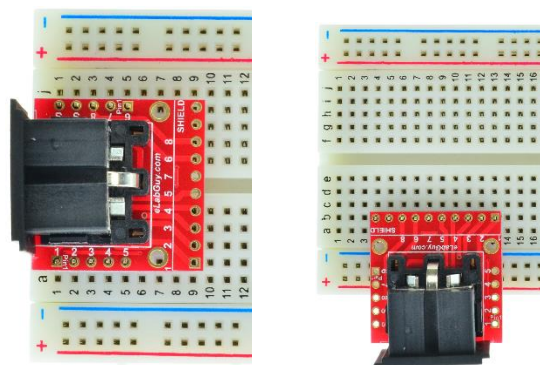


Figure 2: Example of connecting the DIN6-F-BO-V1A on breadboard

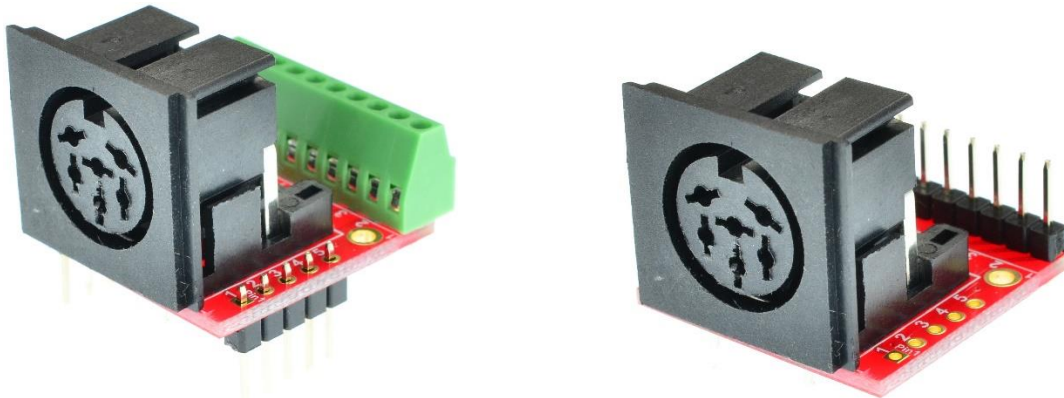
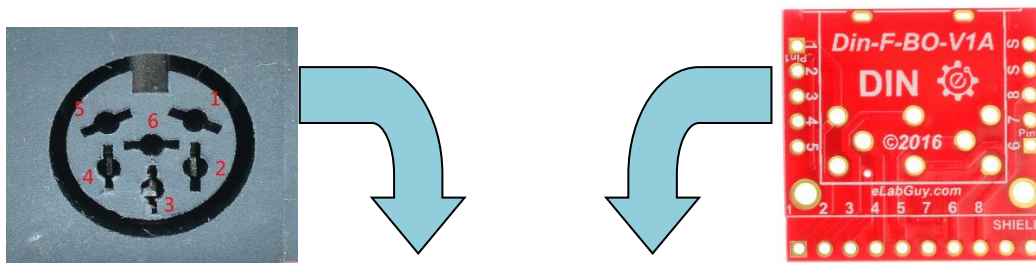


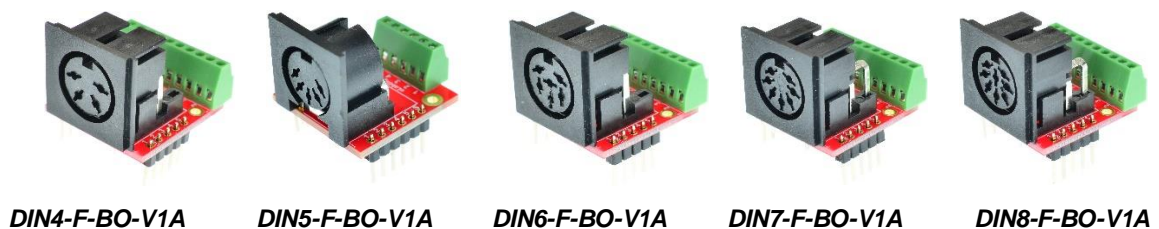
Figure 3: DIN6-F-BO-V1A various connections



<i>Din 6 Female Connector</i>	<i>Din-F-BO-V1A PCB</i>
1	1
2	4
3	2
4	5
5	3
6	8

Figure 4: Din 8 Female connector to Din-F-BO-V1A PCB pinout matching table

Related products from eLabGuy:



DIN4-F-BO-V1A

DIN5-F-BO-V1A

DIN6-F-BO-V1A

DIN7-F-BO-V1A

DIN8-F-BO-V1A